

Capital Kennel Club



Capital Kennel Club of Juneau UKC Obedience and Rally Trials Juneau, Alaska

April 13, 2012: 91th UKC Licensed Obedience Trial

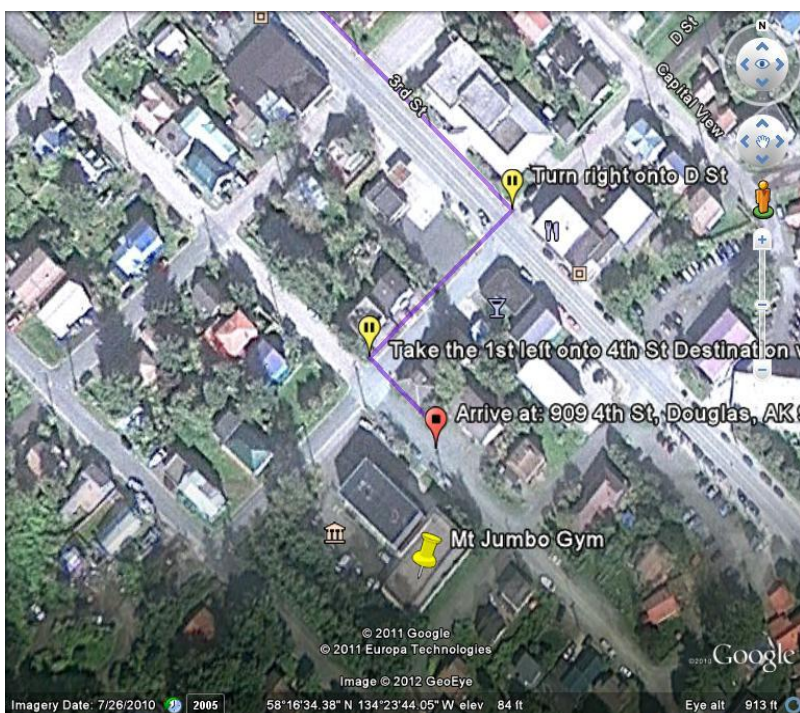
April 14, 2012: 92th UKC Licensed Obedience Trial &
17th UKC Licensed Rally Obedience Trial and

April 15, 2012: 18th & 19th UKC Licensed Rally Obedience Trials

Judge for All Trials: Cindy Leung
(Hillsboro, Oregon)

Trial Location

All trials will be held indoors at Mt. Jumbo Gym, 909 4th Street, Douglas, AK 99824.



Google Earth Image Directions: From the airport or the ferry terminal, drive to downtown Juneau. Exit right the W 10th traffic signal and cross the Douglas Bridge to Douglas Island. At the roundabout, go left and drive to Douglas, approximately 2 miles. Turn right at D Street and drive one block to Mt Jumbo Gym on the corner of 4th and D.

Ring Conditions

Rally Trials: Indoors, basketball gym flooring, partially matted.

Obedience Trials: Indoors, basketball gym flooring, fully or partially matted.

Entry Information

Closing Date: Pre-entries must be received by **April 6, 2012**. Entries will be taken the day of trial (see Trial Schedule below for times).

Move Ups: Move ups will be accepted at all trials. Please notify the Trial Secretary no later than 15 minutes before judging begins.

Special Information: Entries must include the dog's UKC [registration](#) number – **NO EXCEPTIONS**. Click the link provided for forms and information.

Payment: No faxed or email entries will be accepted. No credit card payments are accepted.

Fees per trial:

Pre-entry - \$18 per dog for each class entered and \$10 for 2nd entry same dog/same trial (for example, same dog entered in Rally Level 2 and Rally Level 3 at the same trial; same dog entered in Open and Utility at the same trial) ; Jr. Handler \$10.

Day of trial - \$25 per dog for each class entered and \$12 for 2nd entry same dog/same trial. Please contact the Trial Secretary (see contact information below) if you have any questions about entry fees.

Trial Entry Forms: Available for download at www.ckcoj.org or UKC dogs.com

Rules: All trials will follow UKC rules, available on the UKC website at UKC [Obedience](#) or [Rally](#) rules.

Address for Submitting Entries: Send all Entries to Leslie Peters, P.O. Box 34496, Juneau AK 99803 or leslie.eagles@gmail.com.

Judging Order

Obedience Trials: Utility B, Utility A, Open B, Open A, Novice C, Novice B, Novice A

Rally Trials: Level 3B, Level 3A, Level 2B, Level 2A, Level 1B, Level 1A

Awards

Ribbons for High in Trial, High Scoring Junior, placements 1st through 4th and qualifying scores.

Trial Schedule

Date	Trial	Day-Of Entry Times	Judging Start Time
Friday, April 13	Obedience Trial	6:00-6:30 pm	6:30 PM
Saturday, April 14	Obedience Trial	9:00-9:30 am	9:30 AM
	Rally-O Trial 1	9:00-9:30 am	11 am or immediately after OB Trial 2
Sunday, April 15	Rally-O Trial 2	9:00-9:30 am	9:30 AM
	Rally-O Trial 3	9:00-9:30 am	11 am or immediately after Rally Trial 2

NOTE: A lunch break will be taken at the discretion of the Judge on Saturday and Sunday.

Motels that accept dogs

Super 8 (907) 789-4858;
Prospector (907) 586-3737;
Driftwood (907) 586-2280

For More Information - contact

Trial Chair Michael Higgs at dimyk52@aol.com;

Obedience Trial Secretary Gina Vose at xskiak1@yahoo.com; or

Rally Obedience Trial Secretary Leslie Peters at leslie.eagle@gmail.com.

